



Panel of Industry Experts

Name	Organisation or Group Representing
Paul Weston	Blue Mountains City Council
Corey Shackleton	NSW Rural Fire Service
Ian Weir	Queensland University of Technology
David Lawrence	Housing Industry Association
David Peterson	Bushfire Planning and Design Consultants

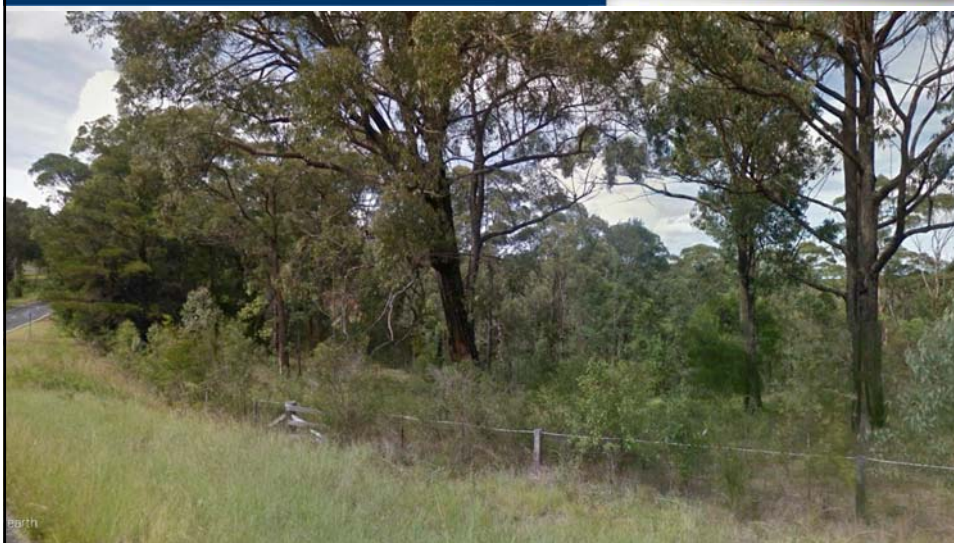
Site Photo 1



All slides are Copyright © of FPA Australia and must not be copied, extracted or distributed without written permission



Site Photo 2



All slides are Copyright © of FPA Australia and must not be copied, extracted or distributed without written permission



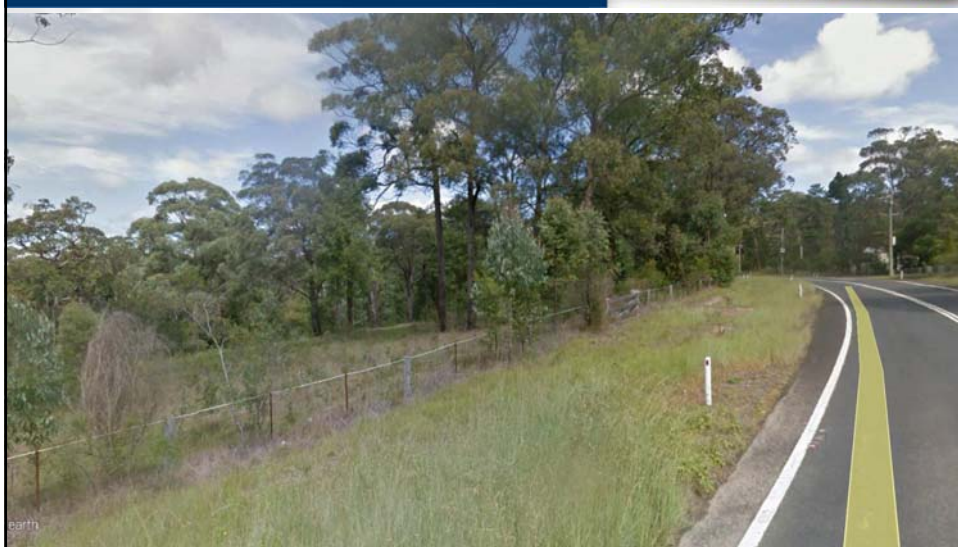
Site Photo 4



All slides are Copyright © of FPA Australia and must not be copied, extracted or distributed without written permission



Site Photo 5



All slides are Copyright © of FPA Australia and must not be copied, extracted or distributed without written permission



Site Photo 6



earth

All slides are Copyright © of FPA Australia and must not be copied, extracted or distributed without written permission



Site Photo 7



earth

All slides are Copyright © of FPA Australia and must not be copied, extracted or distributed without written permission



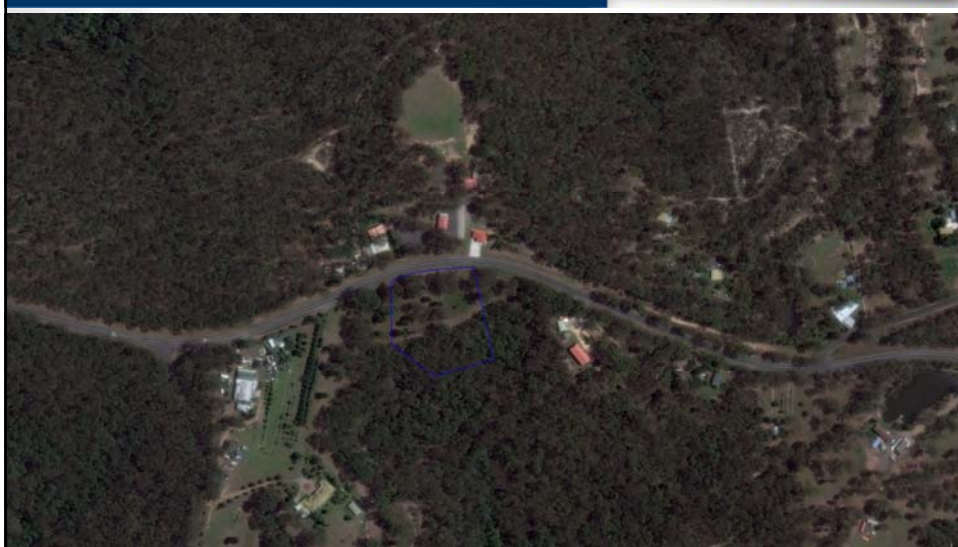
Surrounding Landscape



All slides are Copyright © of FPA Australia and must not be copied, extracted or distributed without written permission



Neighbouring Properties



All slides are Copyright © of FPA Australia and must not be copied, extracted or distributed without written permission



BAL Assessment



All slides are Copyright © of FPA Australia and must not be copied, extracted or distributed without written permission



BAL Determination



Vegetation Classification	Separation Distance	Effective Slope	BAL
Forest	89m	4° Upslope	12.5
Forest	28m	3° Downslope	40
Forest	22m	13° Downslope	FZ
Forest	18m	12° Downslope	FZ
Woodland	54m	2° Downslope	12.5

Based on FDI of 100 (Table 2.4.2) and no vegetation modification

All slides are Copyright © of FPA Australia and must not be copied, extracted or distributed without written permission



Distances to property boundary and effective slope



All slides are Copyright © of FPA Australia and must not be copied, extracted or distributed without written permission



BAL Determination



Vegetation Classification	Separation Distance	Effective Slope	BAL
Forest	30m	5° Upslope	29
Forest	33m	8° Downslope	40
Forest	68m	13° Downslope	19
Forest	55m	12° Downslope	29

Based on FDI of 100 (Table 2.4.2) and vegetation modification to property boundaries

All slides are Copyright © of FPA Australia and must not be copied, extracted or distributed without written permission





Fire Protection Association Australia Life Property Environment

FPA
AUSTRALIA

Options for managing risk to best protect people and existing properties

BPAD
Bushfire Planning & Design

Panel of Industry Experts

Name	Organisation or Group Representing
Corey Shackleton	NSW Rural Fire Service
Ian Weir	Queensland University of Technology
Justin Leonard	CSIRO
David Peterson	Bushfire Planning and Design Consultants
Ben Honan	GIO

All slides are Copyright © of FPA Australia and must not be copied, extracted or distributed without written permission

How do we protect people and existing buildings



- Significant investment in research and development that largely benefits new buildings
- Thousands of homes in Bushfire Prone Areas throughout Australia do not meet current building standards or planning requirements
- Since Black Saturday bushfires, Fire Services across Australia have implemented enhanced warning systems and changed their key messages to focus on leaving early
- Research and development of complimentary or alternative protection measures is limited

All slides are Copyright © of FPA Australia and must not be copied, extracted or distributed without written permission



How do we protect people and existing buildings



Issues to be considered:

- Cost Vs benefit
 - What financial incentives are or should be available
- Which building upgrades will provide the most benefit
 - Is there any point in a partial upgrade?
- Alternatives to building work improvements:
 - Bushfire Sprinkler Systems
 - Private Bushfire Shelters
 - Landscaping and vegetation management

All slides are Copyright © of FPA Australia and must not be copied, extracted or distributed without written permission



How do we protect people and existing buildings



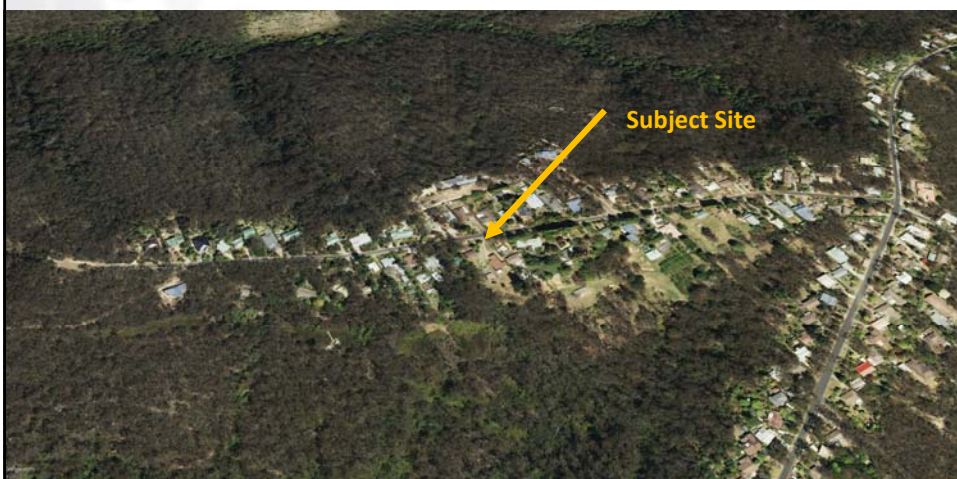
Issues to be considered:

- Alternatives to upgrading the building or site:
 - Early evacuation
 - Neighbourhood Safer Places / Community Refuges
 - Sell up and relocate to a safer area
 - Government Buy Back of high risk properties / land

All slides are Copyright © of FPA Australia and must not be copied, extracted or distributed without written permission



Case Study 1



All slides are Copyright © of FPA Australia and must not be copied, extracted or distributed without written permission



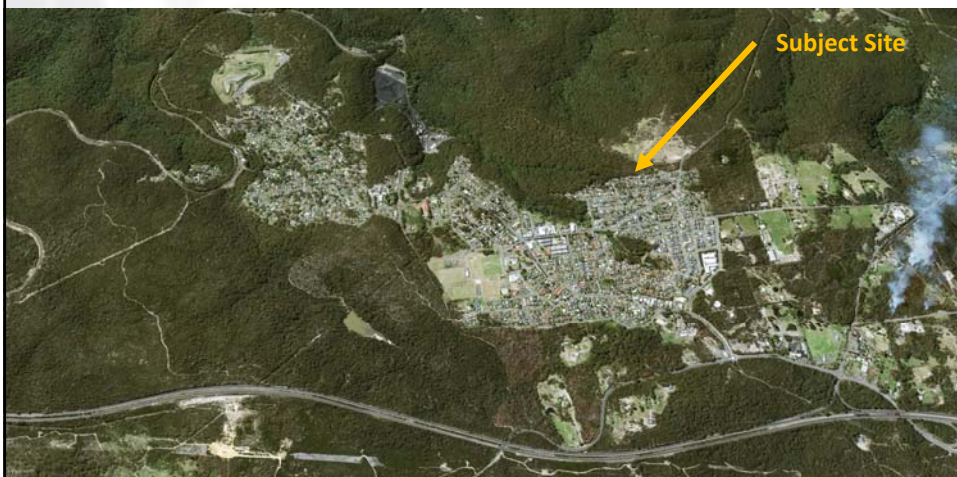
Case Study 1



All slides are Copyright © of FPA Australia and must not be copied, extracted or distributed without written permission



Case Study 2



All slides are Copyright © of FPA Australia and must not be copied, extracted or distributed without written permission



Case Study 2




Subject Site

All slides are Copyright © of FPA Australia and must not be copied, extracted or distributed without written permission

FPA Australia SPAD

Case Study 2



All slides are Copyright © of FPA Australia and must not be copied, extracted or distributed without written permission

FPA Australia SPAD