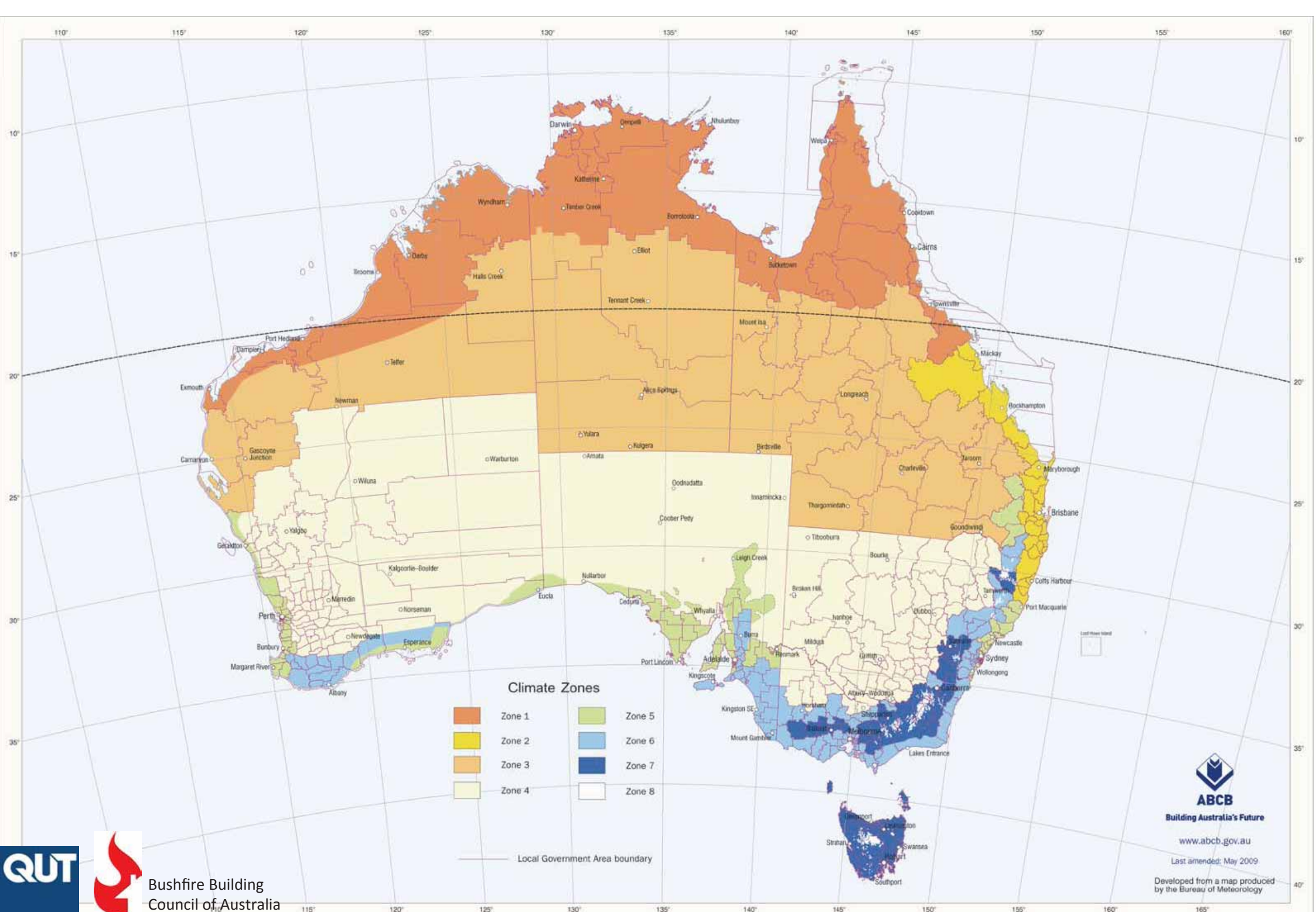










Adapted from Blong R J, Sinai D and Packham C, 2000, Natural Perils in Australia and New Zealand, Swiss Reinsurance, Sydney



**Climate Zones**

- |   |        |  |        |
|---|--------|--|--------|
|  | Zone 1 |  | Zone 5 |
|  | Zone 2 |  | Zone 6 |
|  | Zone 3 |  | Zone 7 |
|  | Zone 4 |  | Zone 8 |

Local Government Area boundary



Bushfire Building Council of Australia



**ABCB**  
Building Australia's Future

[www.abcb.gov.au](http://www.abcb.gov.au)

Last amended: May 2009

Developed from a map produced by the Bureau of Meteorology







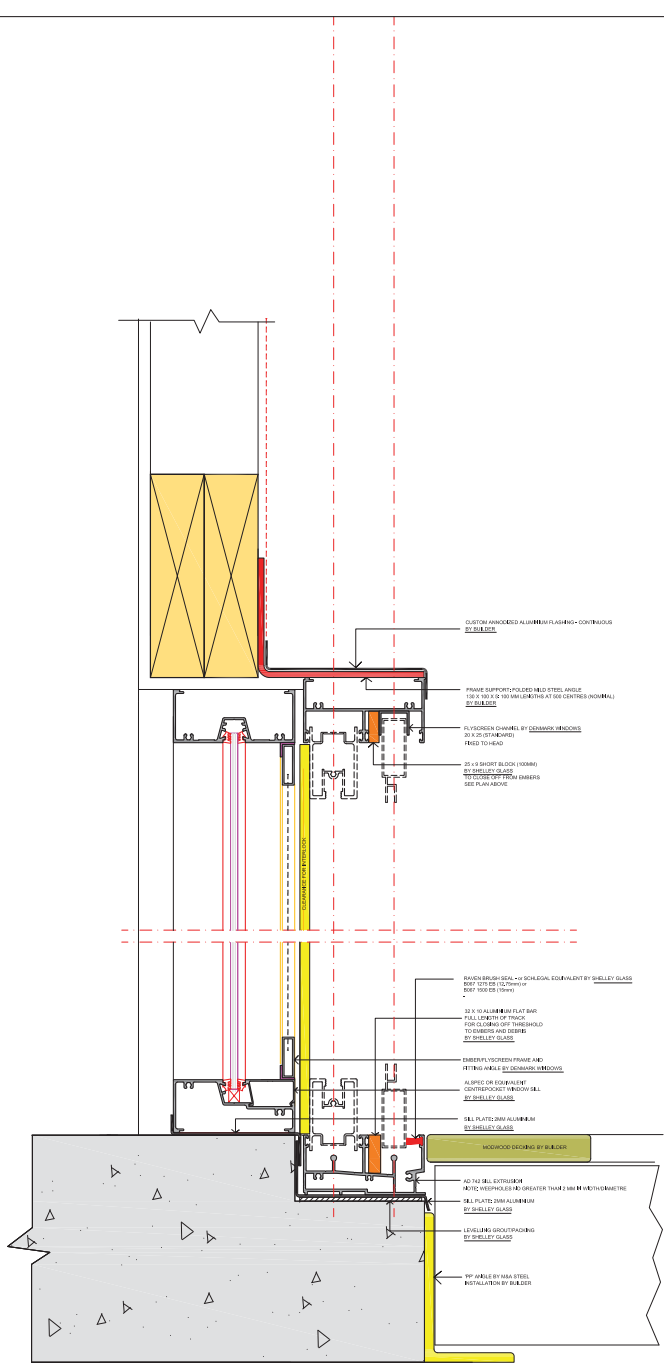




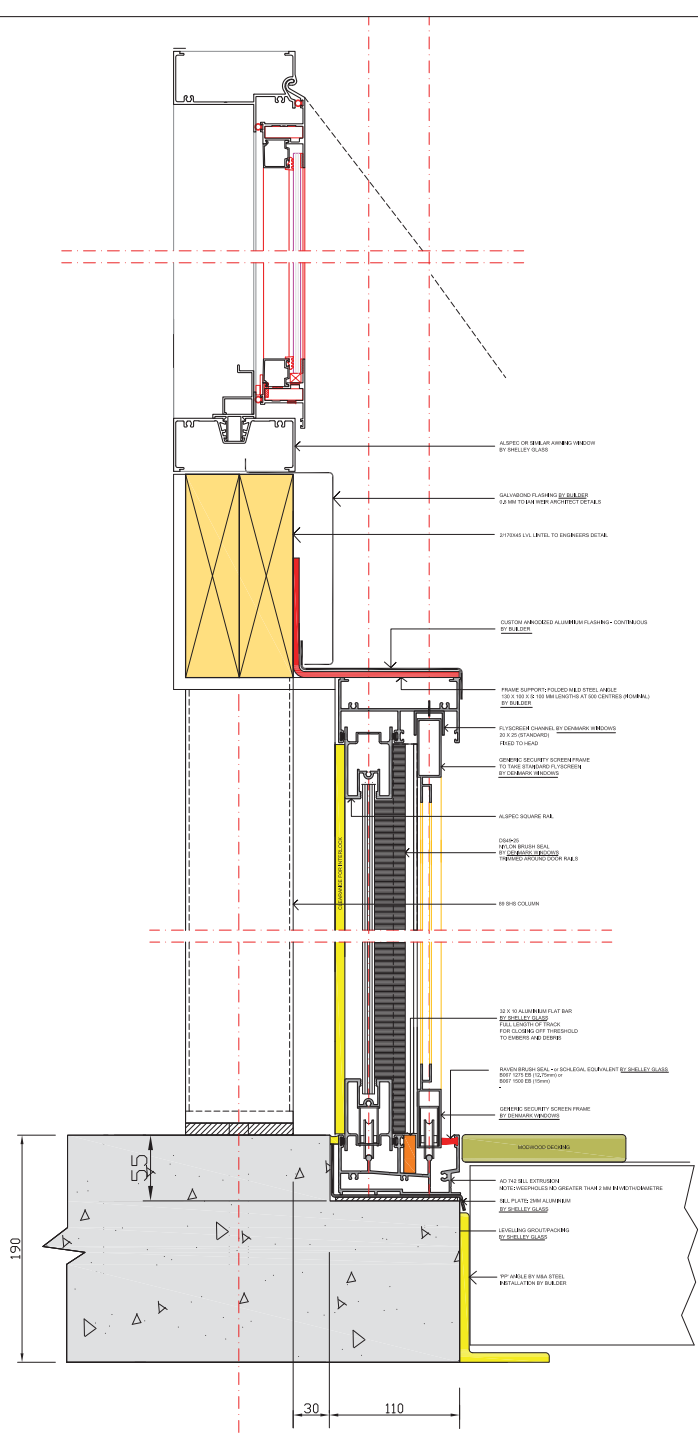




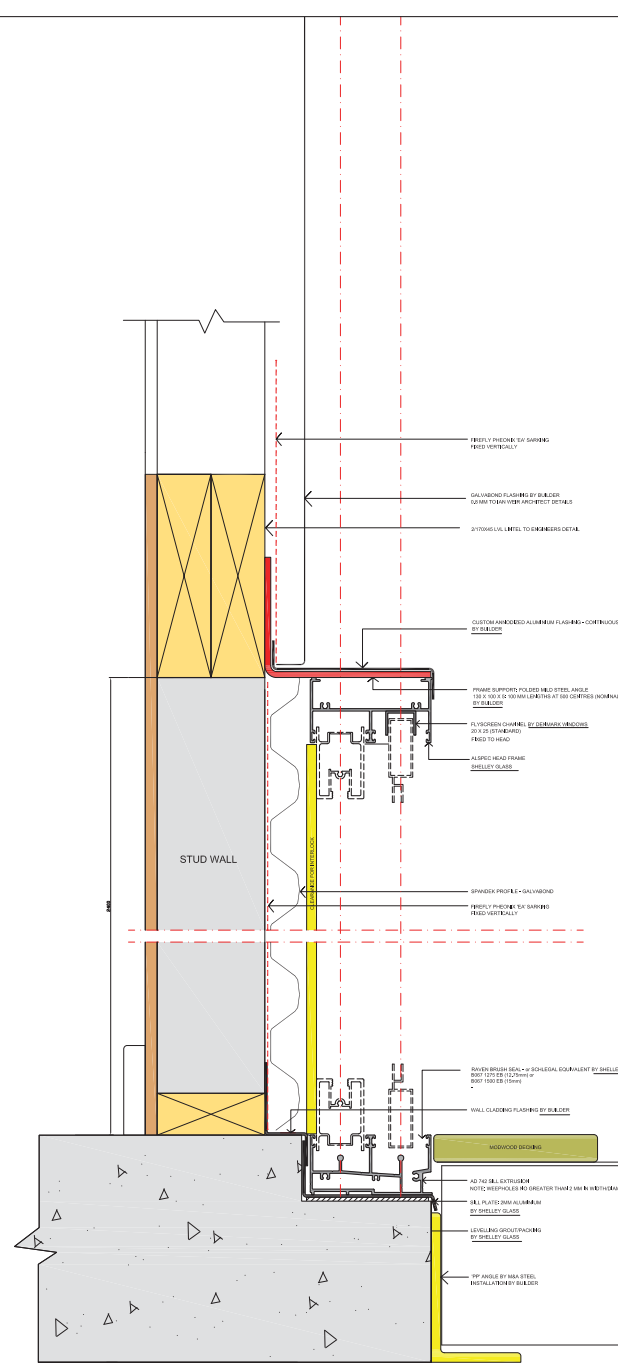




DW1



D2



WALL BETWEEN D1 & D2







