

Visual Impact Minimization Objectives



‘Acceptable Solution’ - via planning approval process or fire break notice.



(photomontage)



Short Beach House
Justifiable variation to 20m BPZ rule





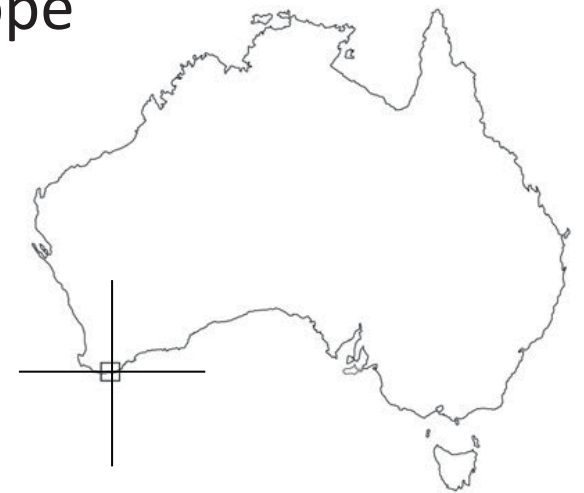
20m BPZ

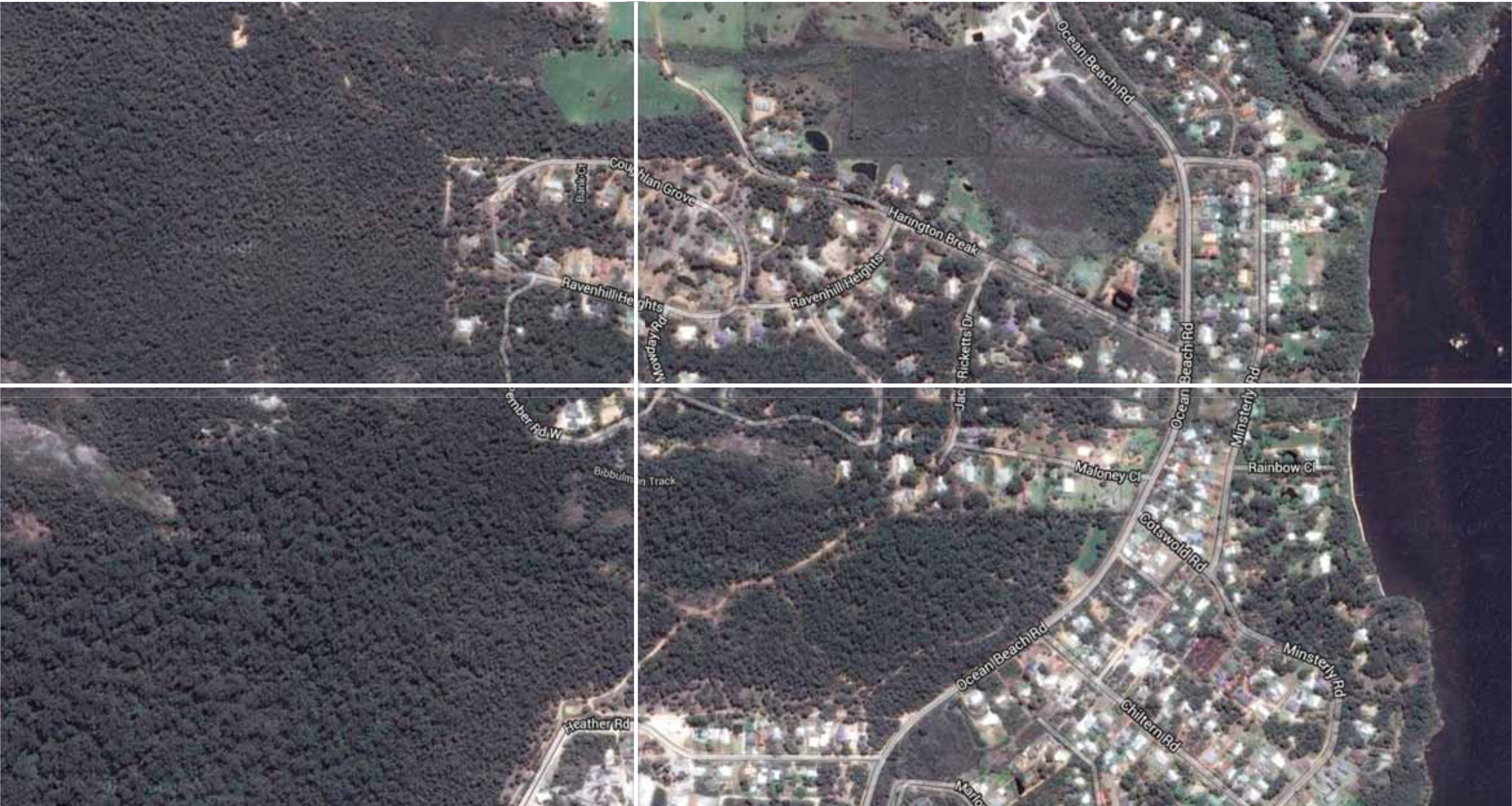


Karri Fire House (BAL-40) (with Kylie Feher Architect)

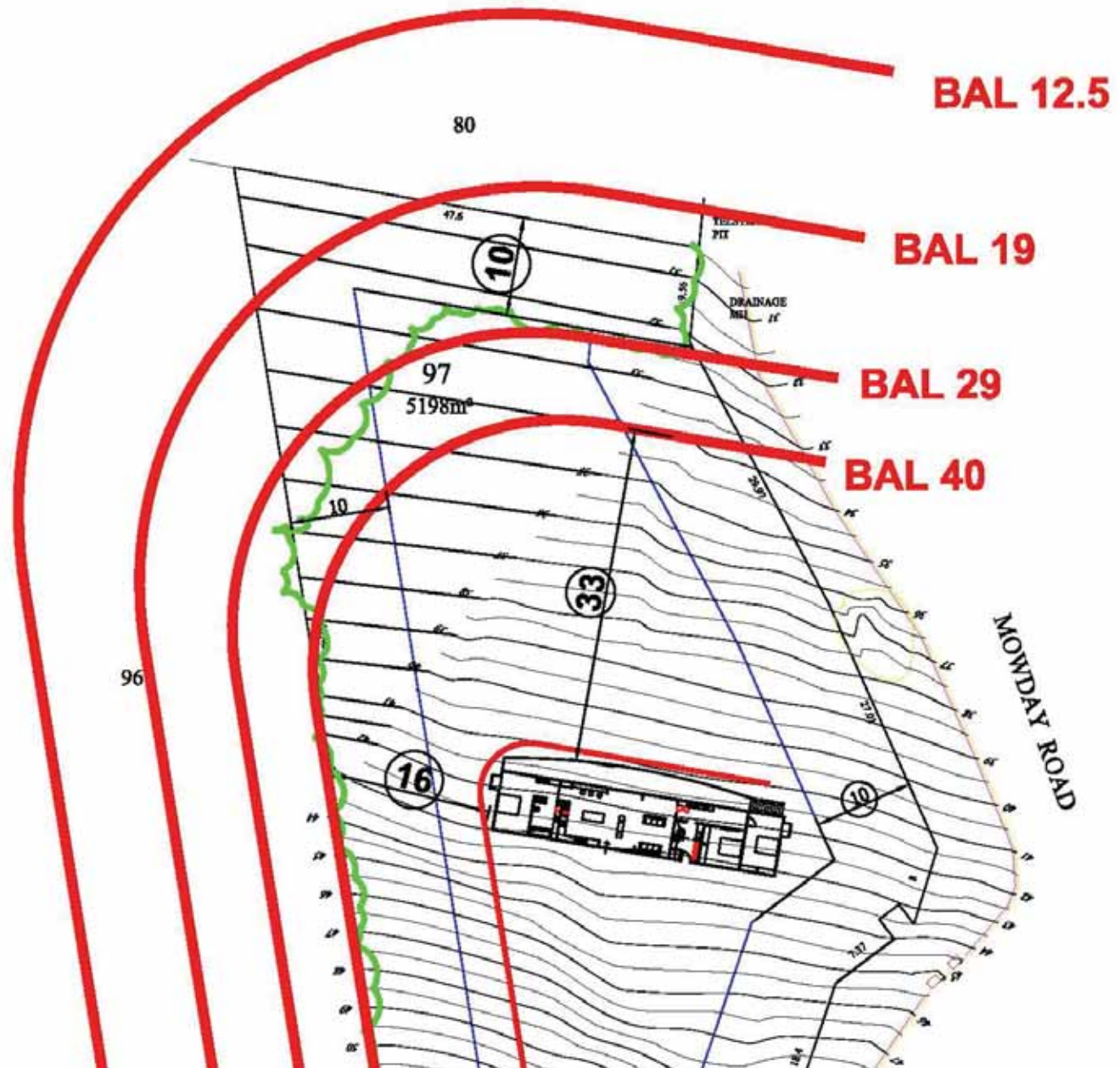
Karri Fire House project details

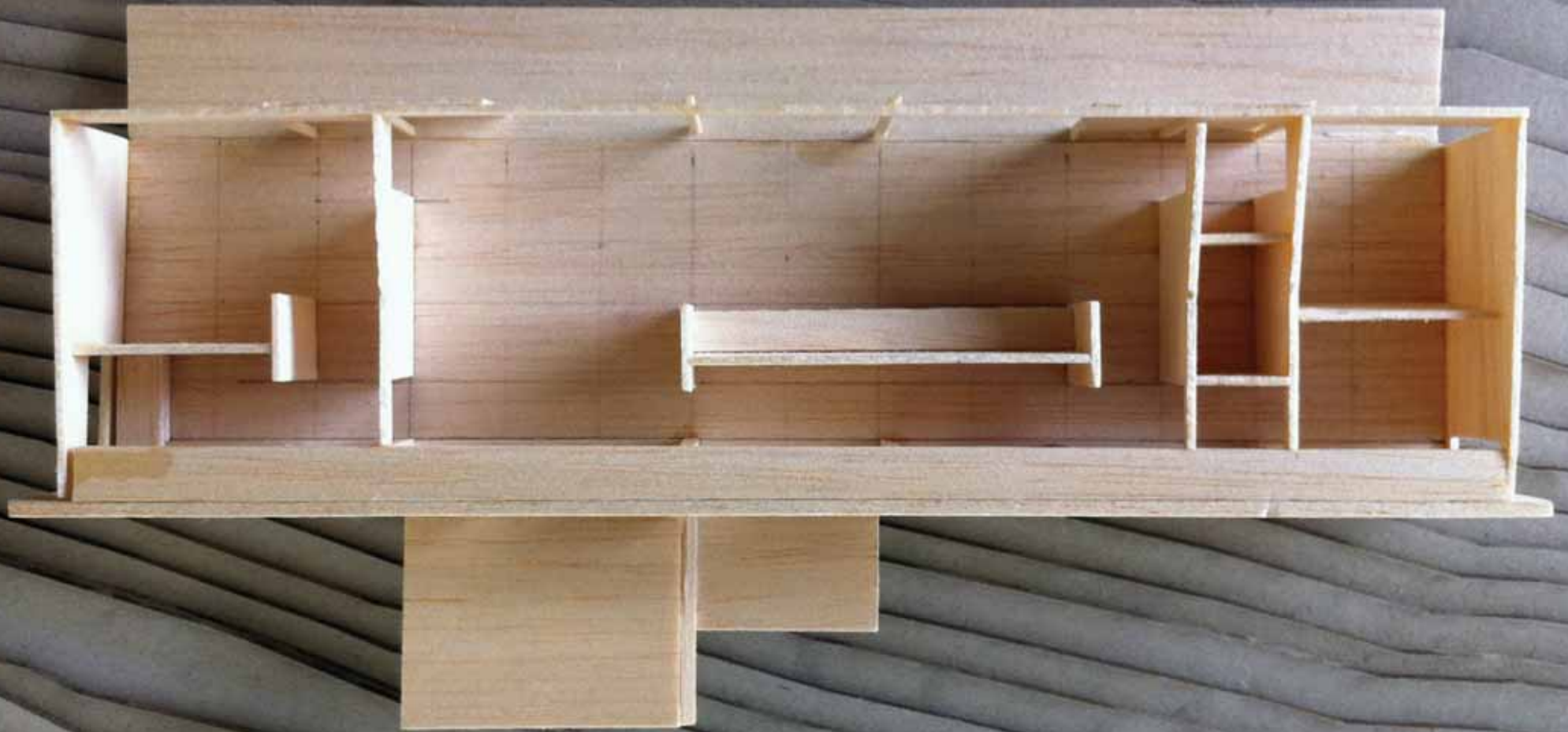
- Owner-built
- Ian Weir Architect and Kylie Feher Architect
- **BAL-40**
- 170m²
- \$500K
- Less than \$3000/m² Enclosed floor area
- 15° slope
- Vegetation Conservation Corridor on downslope
- 1400m² block
- Shire of Denmark WA

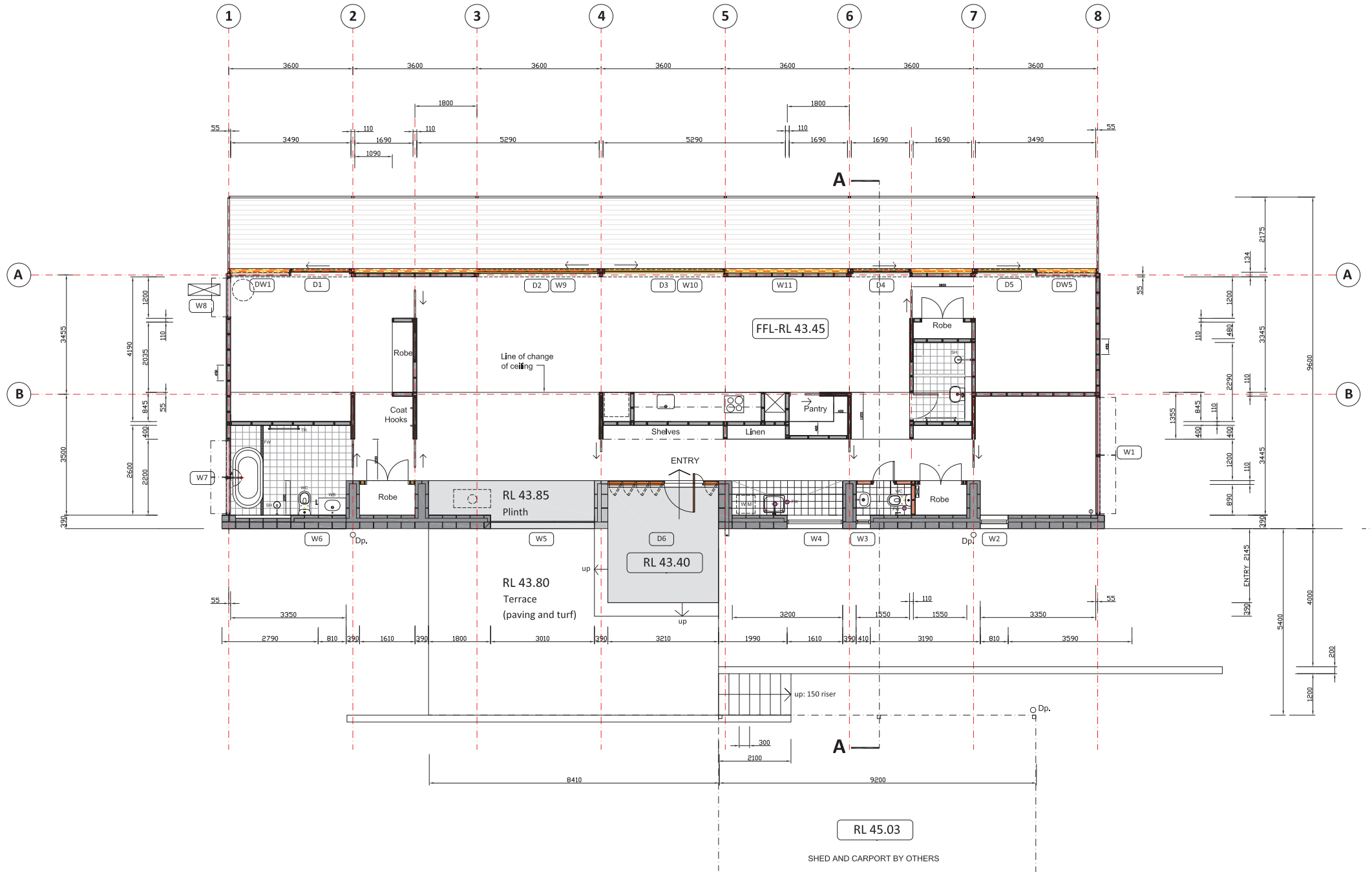




BAL ASSESSMENT AS PER AS3959.2009








NOTES ON THE USE OF THESE DRAWINGS:
 USE FIGURED DIMENSIONS ONLY; DO NOT SCALE.
 IF A DISCREPANCY ARISES CHECK WITH MAIN PROJECT ARCHITECT.
 DO NOT WORK FROM REDUCED SCALE DRAWINGS (A-C SIZE PAPERS).
 COPYRIGHT OF ALL DRAWINGS & WORKS EXECUTED FROM THEM IS VESTED IN
 QUEENSLAND UNIVERSITY OF TECHNOLOGY AND USE OF THEM FOR ANY OTHER
 PERMISSIONS STRICTLY PROHIBITED. IT IS THE BUILDERS RESPONSIBILITY TO
 ENSURE ALL WORKS ARE CARRIED OUT WITH DUE CARE AND
 DILIGENCE TO COMPLY WITH THE CONTRACT DOCUMENTS.


 Dr Ian Watt,
 School of Design,
 Faculty of the Built Environment & Engineering,
 Queensland University of Technology.
 Email: ian.watt@qut.edu.au
 Telephone: 0411 355 351

| | | |
|------------|--|-------------|
| Project | Ausma House | |
| Scale @ A1 | 1:50 | Drawn by IW |
| Date | 12/Mar/13 | Checked IW |
| Date | Lot 2 Wyman Trail, Ocean Beach Shire of Denmark | |

| | | |
|--|-------------------|--|
|  A2 | Floor Plan | |
|--|-------------------|--|



